

As **[a user persona]**, I want **[to perform this action]** so that **[I can accomplish this goal]**.

— USER PERSONAS —



INFRASTRUCTURE ENGINEER



INFRASTRUCTURE ADMIN



DEVOPS ENGINEER



APPLICATION OWNER



SUPPORT ENGINEER



PLATFORM ENGINEERING MANAGER

INFRASTRUCTURE MANAGEMENT



INFRASTRUCTURE ENGINEER

I want to use Connected TAC

to simplify and automated the bug support process

I use HCL

to ensure the servers are up to date with compliant software

I want to view Security Advisories

so I can assess if my infrastructure components are at risk

I want to use LCM

to track software & firmware versions to all entities in the cluster (on supported hw)
 to maintain & upgrade software & firmware versions in a cluster
 so that I can use one-click upgrade offerings for each of the products in a cluster
 to perform non-disruptive upgrade workflows to AOS, hypervisor version, host firmware, Foundation, Nutanix Files & Nutanix Cluster Check, node-by-node

I want to use NCC

to help diagnose cluster health & identify configurations qualified & recommended by Nutanix.

I want to use Prism Element & Prism Central

so I can quickly assess and monitor the health of all my platforms



DEVOPS ENGINEER

I want a dashboard

that shows real-time health of (only) my infrastructure and platforms

I want telemetry APIs

so I can consume health and performance data into my own systems



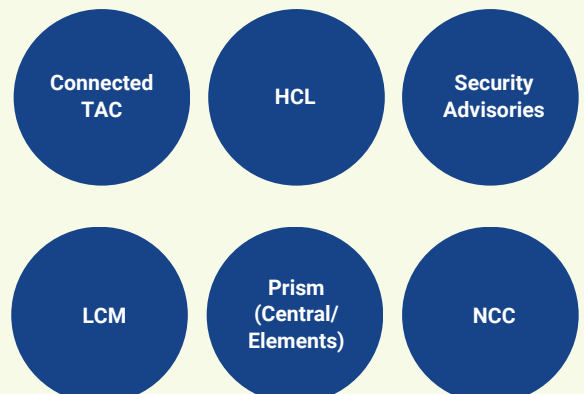
SUPPORT ENGINEER

I want a centralised health dashboard

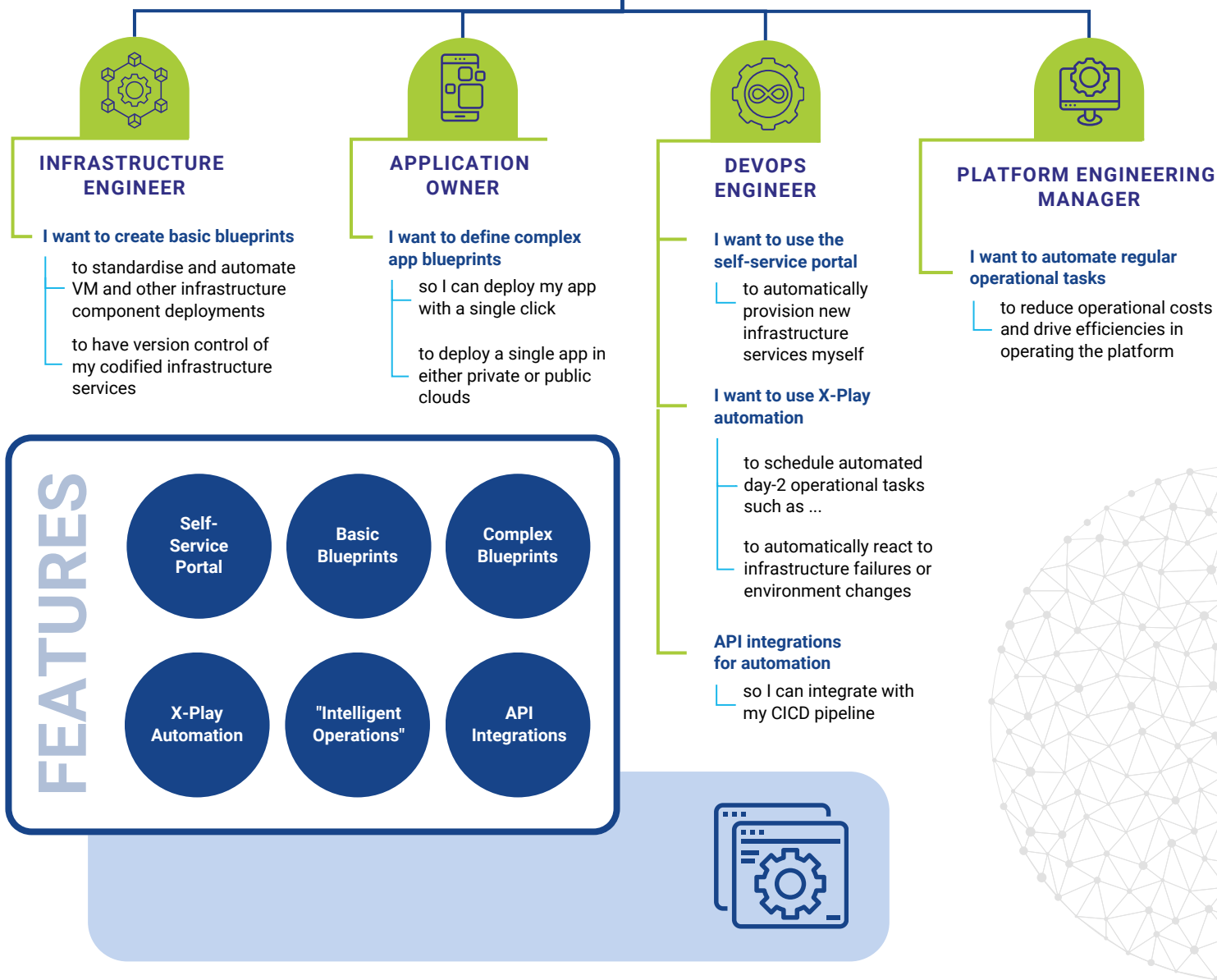
so I can quickly assess and monitor the health of all my platforms



FEATURES



AUTOMATION & AGILITY



BACKGROUND

